

Gas sampling with ROV

Sector

Oil & Gas, Nature

Field of application

Seabed, Leakage, etc.

Type of samples

Gas or light fluid

How it works

When the ROV is on to position, it will Hoover over the gas source and collect the gas. When the funnel is filled with gas, the ROV pilot activates the solenoid valve, and the gas will flow into the container vessel

Contact:

subsea@subcpartner.com

SubC Partner A/S
Subsea Engineering
Tvaerkaj 2
6700 Esbjerg
Denmark

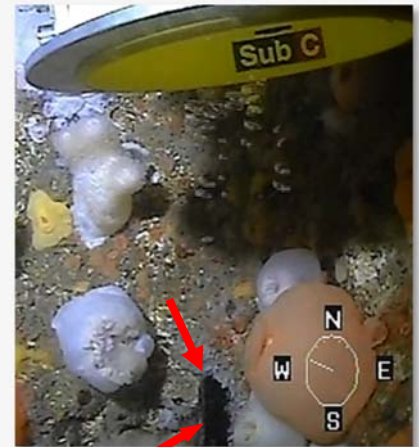
www.subcpartner.com

Tel: +45 7023 2122

SUBC HAS DEVELOPED A GAS SAMPLING TOOL. THE EFFICIENT AND LOW COST SOLUTION IS OPERATED BY ROV. THE GAS SAMPLING SYSTEM MAKES GAS EXTRACTION EASY AND SAFE.



The gas sampler



Seabed gas source



Sampling the gas from source



Empty gas sampler



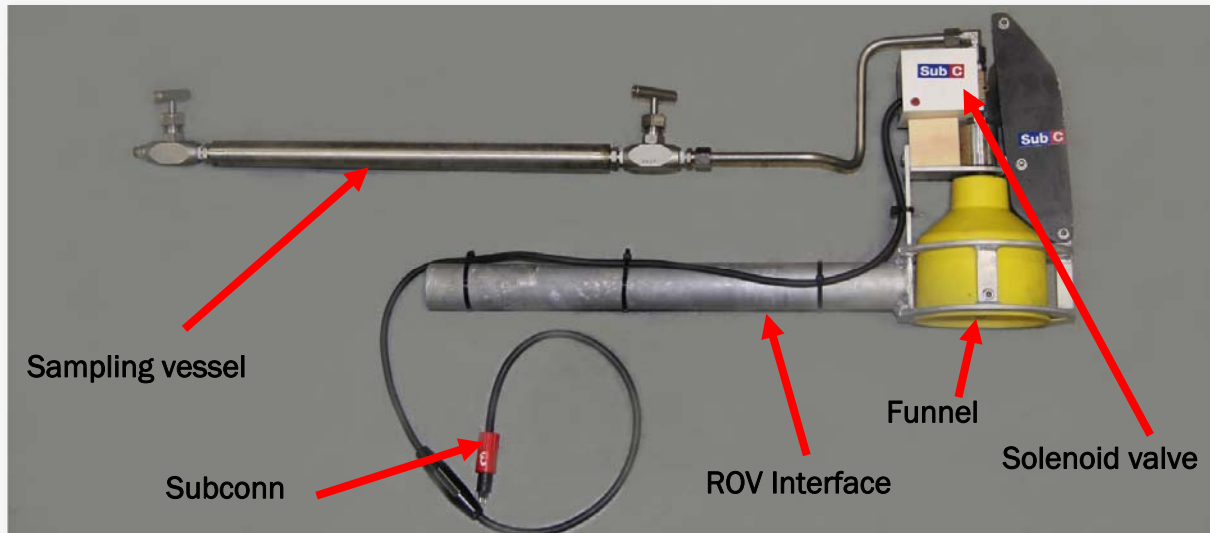
Collecting gas



Securing gas sampling

- Dimensions: 1000m x 350 incl. sampling tool
- Sampling volumen: 150 - 5000 ml
- Weight: 4,5 kg in air / 2,8 kg in water

- Material: AW6082 and SS316T
- Control: SUBCONN MCIL2M - 24VDC
- Working depth: max 160 m



Sampling vessel

Subconn

ROV Interface

Funnel

Solenoid valve